



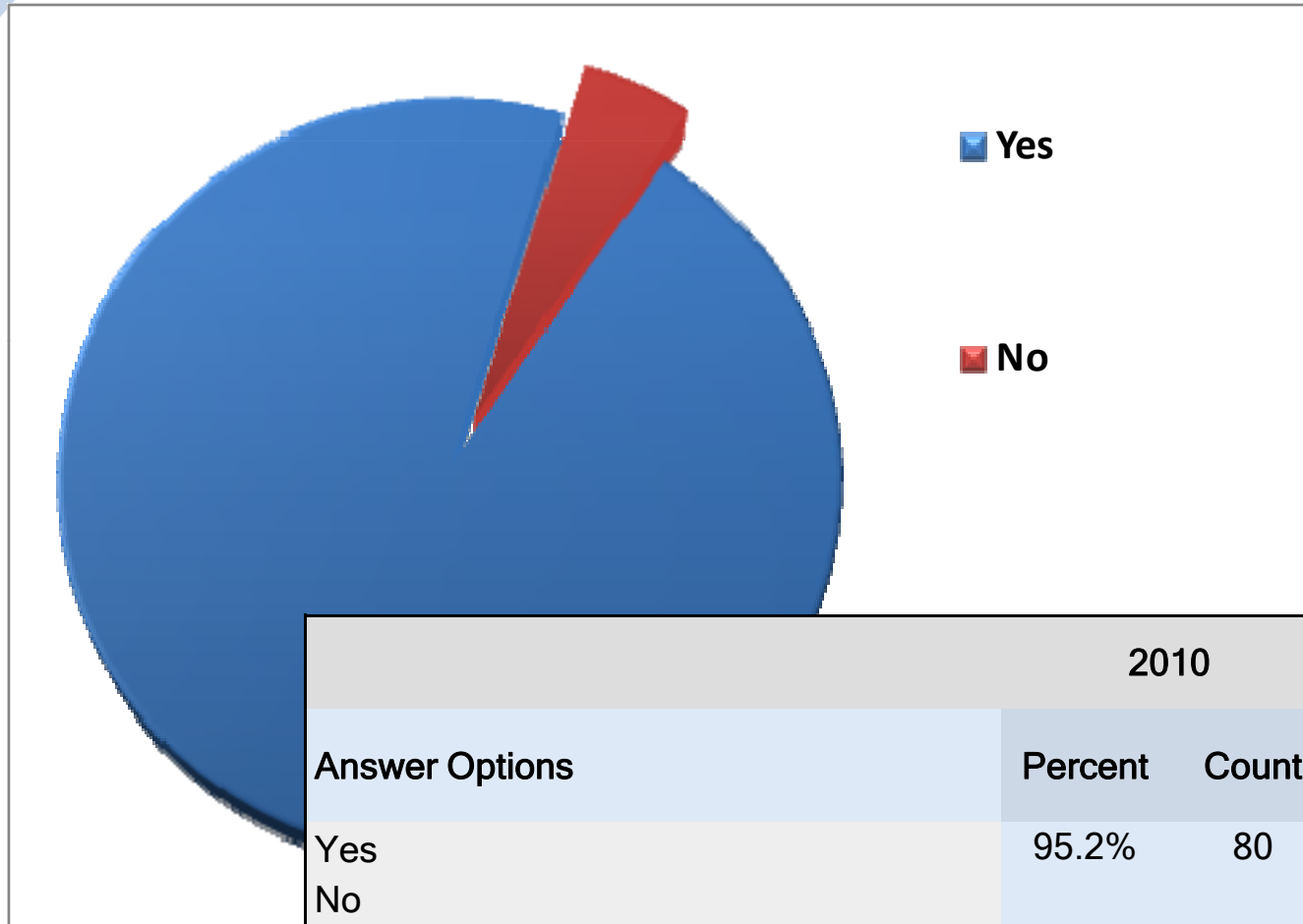
PMI Buffalo Chapter

2010

Annual Membership Survey Results



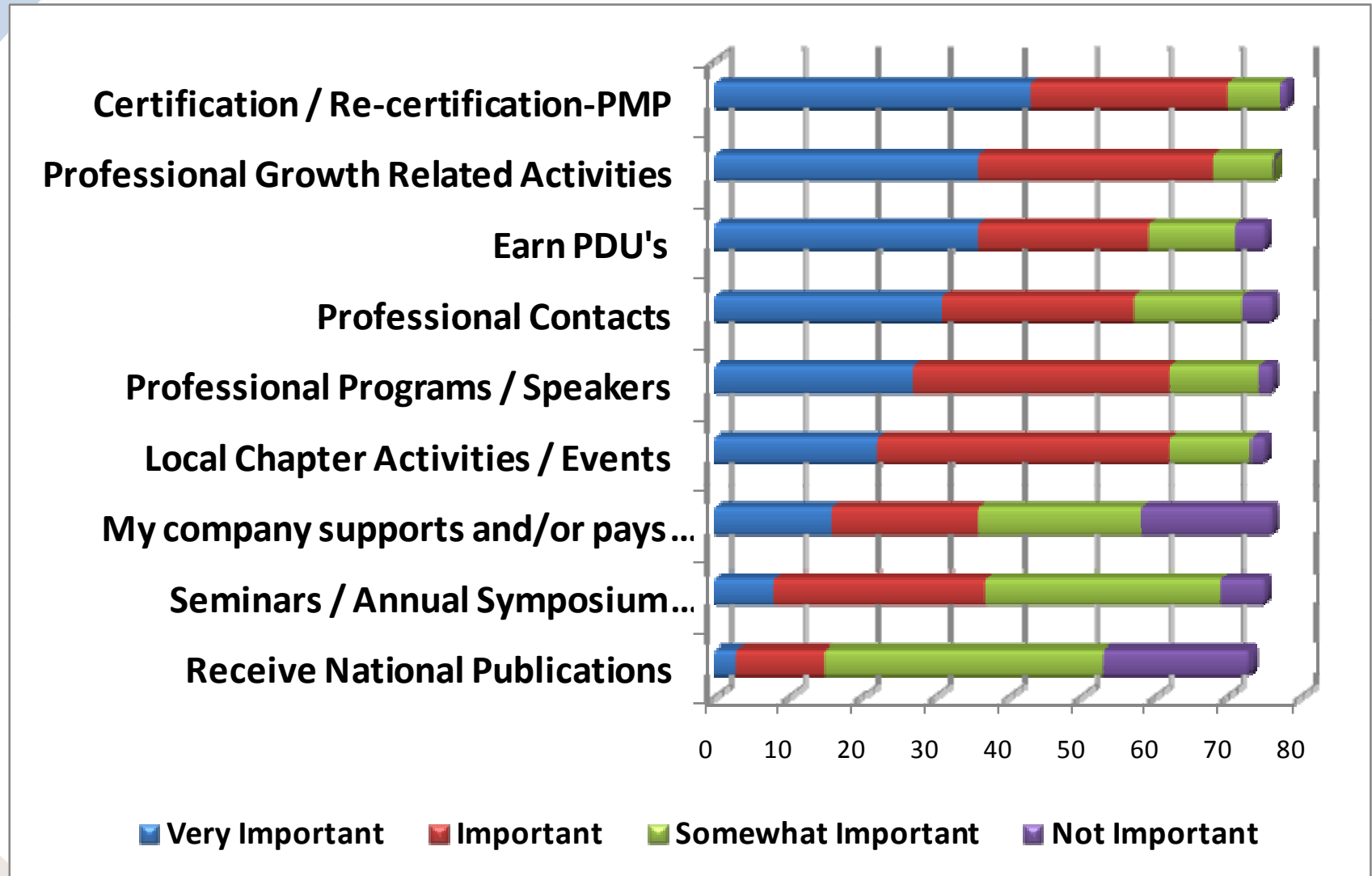
Are you currently a member of PMI?



Answer Options	2010		2009	
	Percent	Count	Percent	Count
Yes	95.2%	80	91.1%	102
No				
- Could you define your reasons for not joining PMI?	4.8%	4	8.9%	10

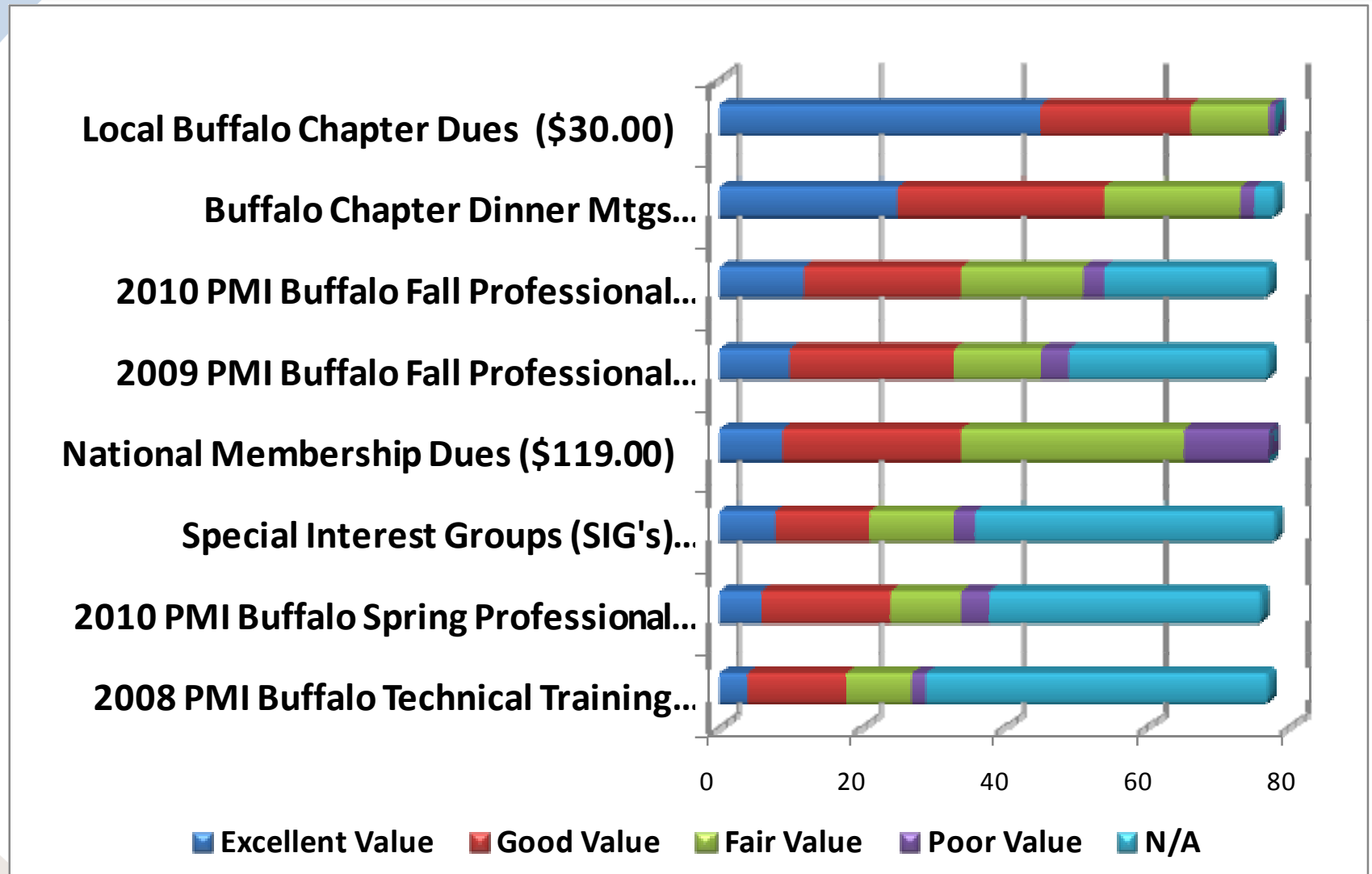


Why do you participate in PMI?





Value of PMI Services?



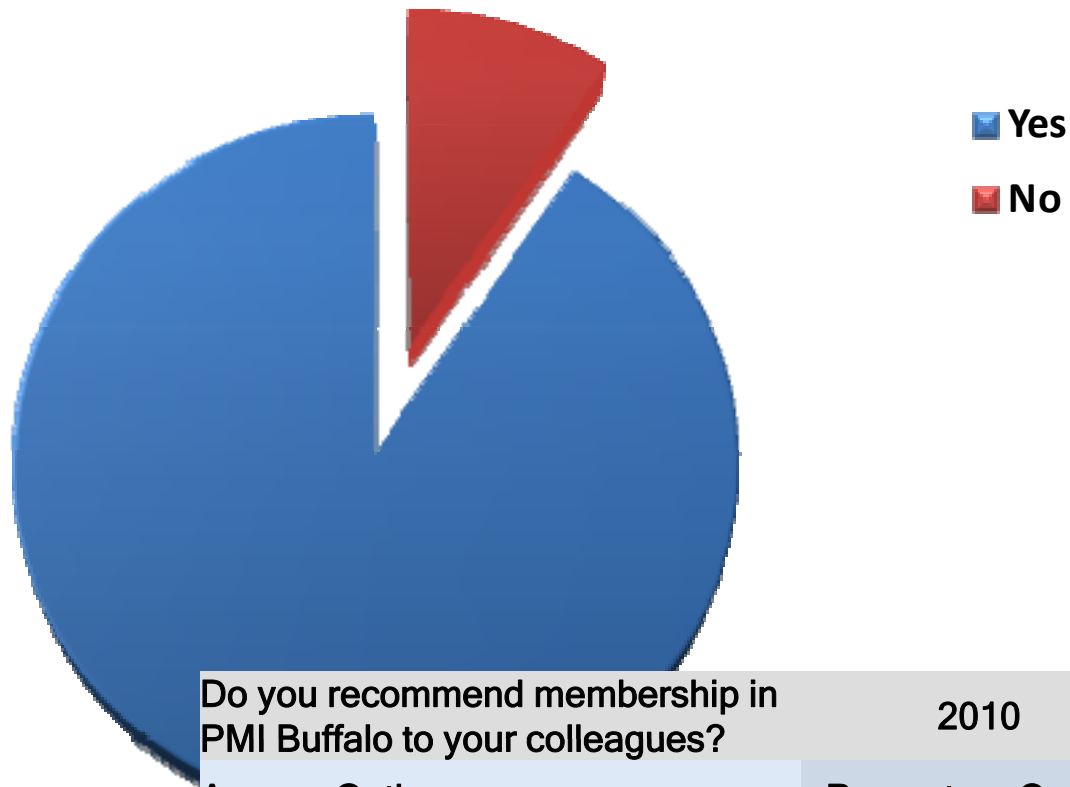


Are you a member of the Chapter?



Are you a current member of the PMI Buffalo Chapter?	2010		2009	
	Percent	Count	Percent	Count
Yes	94.9%	74	96.8%	92
No	5.1%	4	3.2%	3

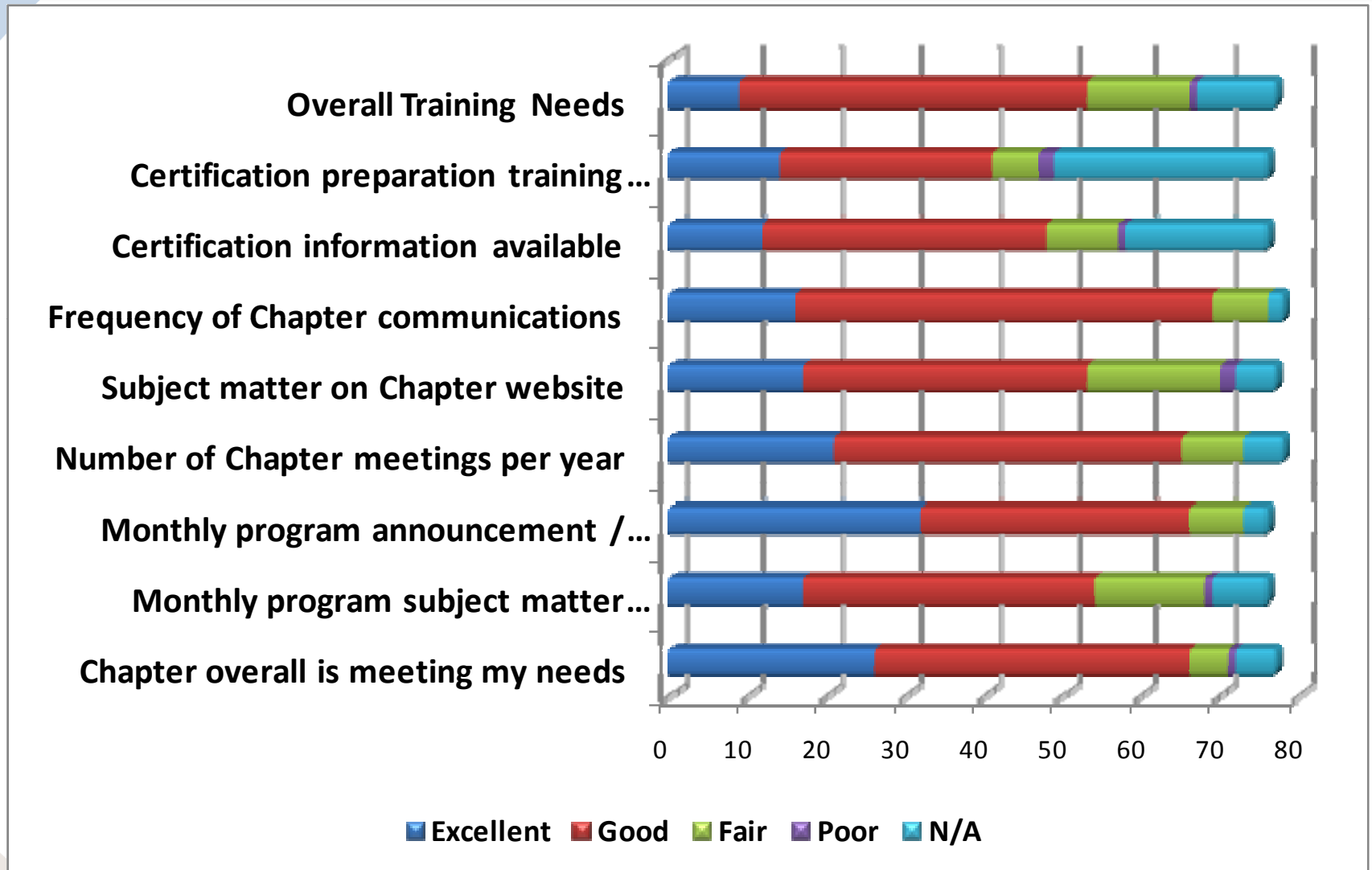
Do you recommend membership?



Do you recommend membership in PMI Buffalo to your colleagues?	2010		2009	
	Percent	Count	Percent	Count
Yes	90.5%	67	96.7%	88
No	9.5%	7	3.3%	3
	<i>answered question</i>	74	91	
	<i>skipped question</i>	10	21	



How is the Chapter meeting your needs?





Comments: programs and services

- Training programs
 - with extended duration
 - should be more organized, professional
 - More like Blackbelt programs

Please provide any comments on Chapter programs and services (past, or future), or how we can better meet your needs:

Answer Options	Response Count
	35
<i>answered question</i>	35
<i>skipped question</i>	49



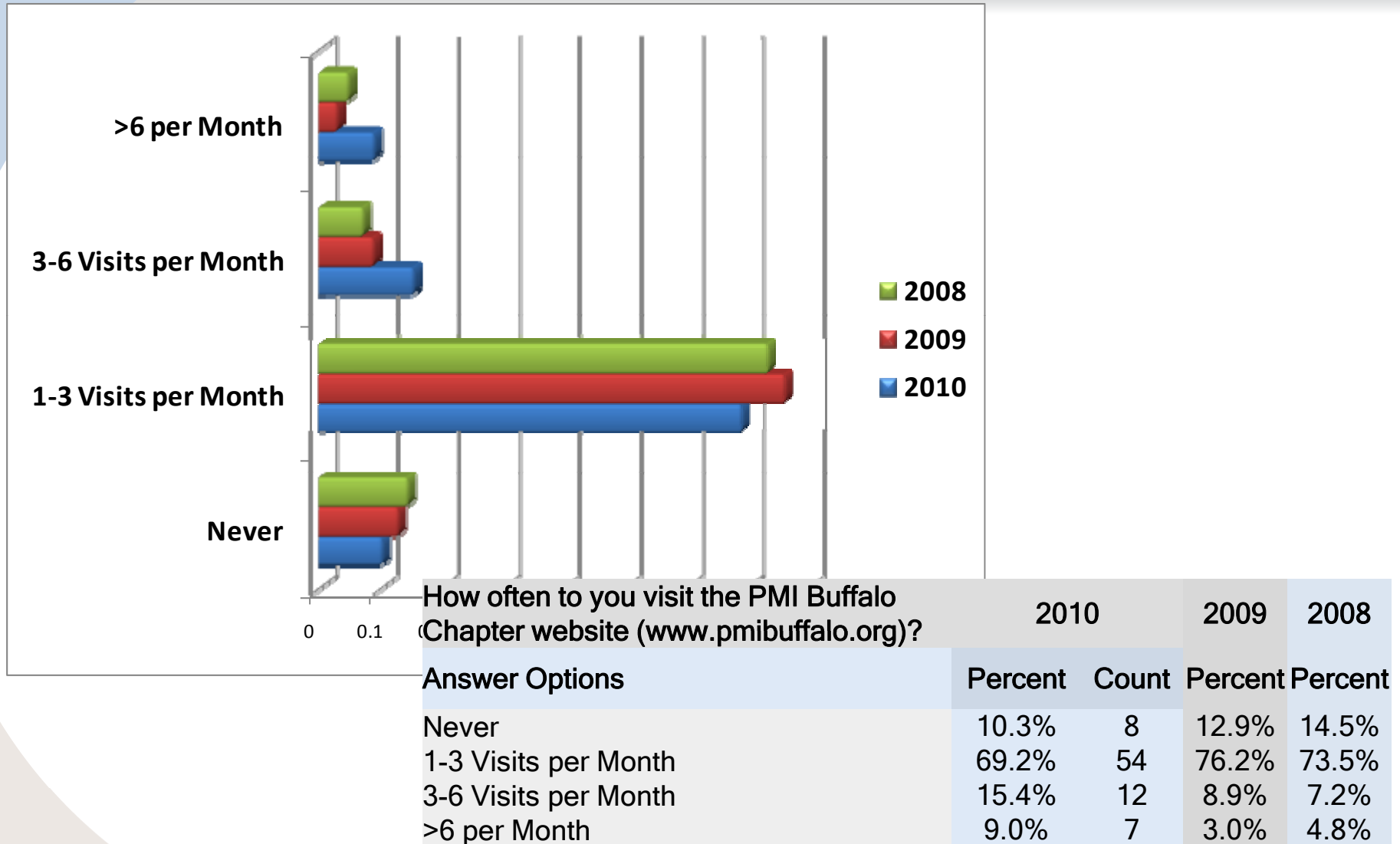
Comments: programs and services

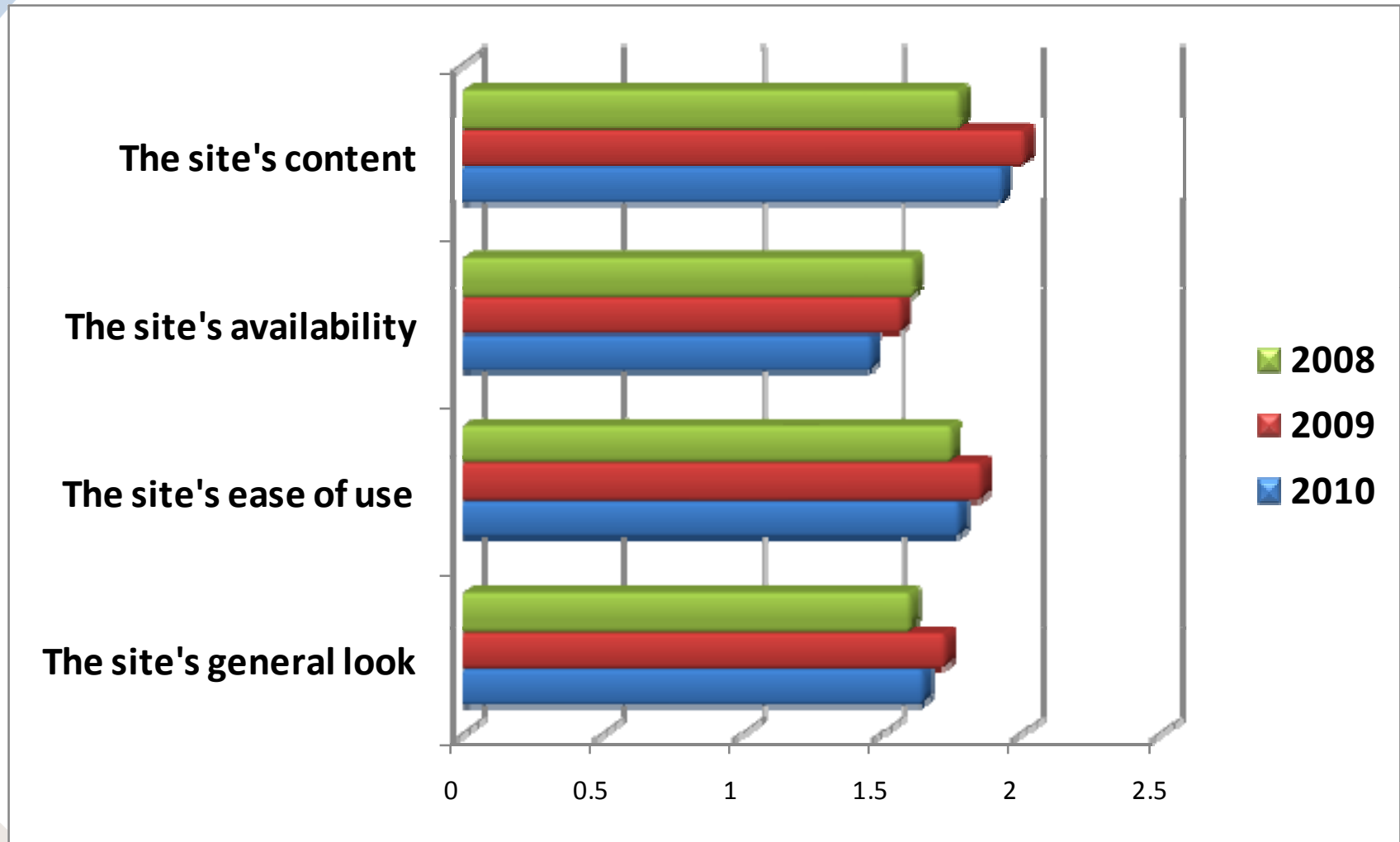
- Outreach:
 - Continue profiling local companies at meetings.
 - Need to "brand" the organization to create a buzz in the community and a desire to join.
 - Outreach for members in transition
- Membership
 - Book sharing program
 - Telecom and/or WebEx programs



Comments: programs and services

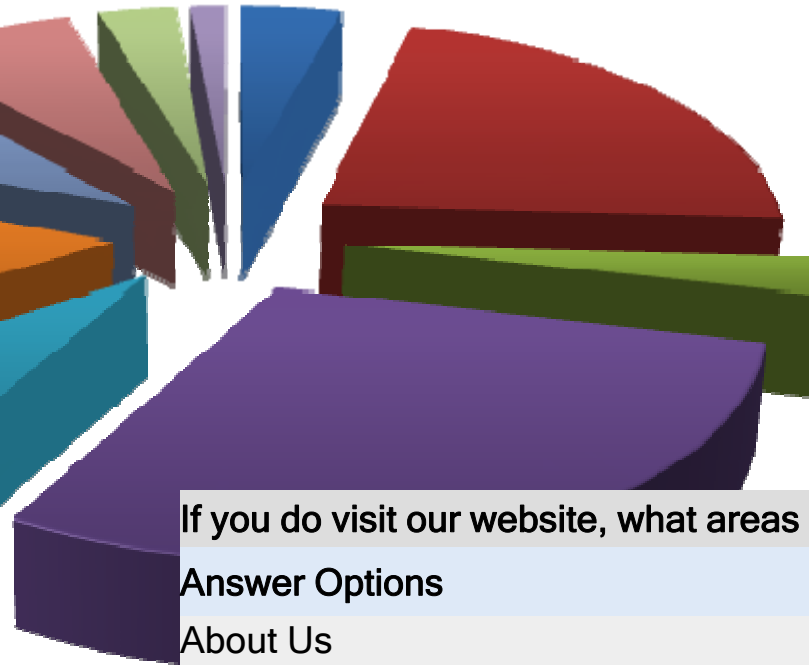
- Events
 - More lunchtime/afternoon hour-long
 - Full day or half day programs, Weekend events.
 - Venues must have enough seating
 - Dinner meetings:
 - alternate locations
 - start a half hour later (at 6pm)
 - Events downtown
 - Summer monthly meetings





Response Percent

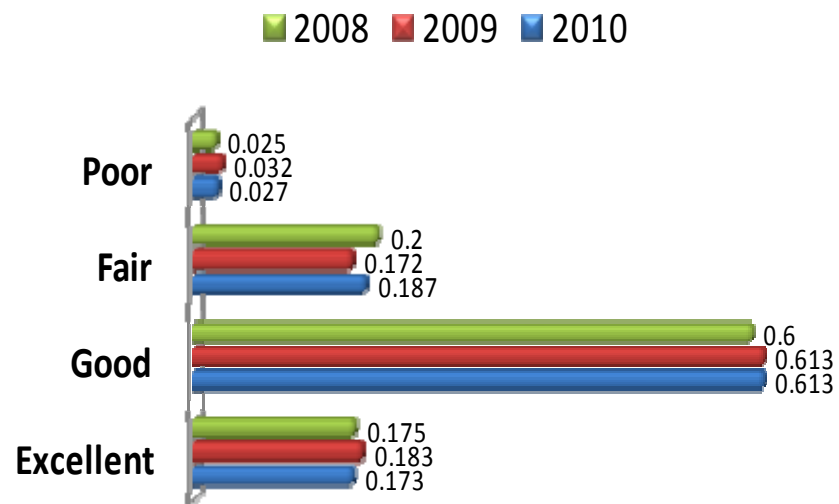
- About Us
- Chapter News
- Chapter Statistics
- Events (& Registration Information)
- Certifications (Training Information)
- Resources - Job Posting
- Resources - Document Repository



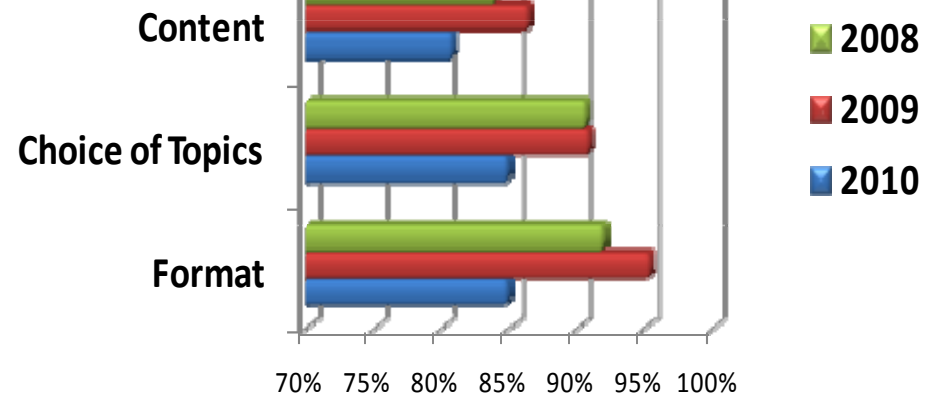
If you do visit our website, what areas do you find to be the most useful?

Answer Options	2010	2009
About Us	12.3%	18.6%
Chapter News	65.8%	68.6%
Chapter Statistics	8.2%	
Events (& Registration Information)	89.0%	87.2%
Certifications (Training Information)	23.3%	20.9%
Resources - Job Posting	45.2%	22.1%
Resources - Document Repository	21.9%	24.4%
Volunteer Opportunity Postings	21.9%	9.3%
Contact Us	9.6%	1.2%
Other (please specify)	4.1%	

Newsletter Value over Time



Editorial Style





What outside groups do you belong?

- Niagara Frontier Chapter of the American Society of Training and Development
- Investigating Requirements Analyst organization and certification
- InfoTech Niagara ISM
- AACE
- American Planning Association
- IIBA - multiple
- Erie/Niagara Chapter of the NYS Society of Professional Engineers
- Buffalo Niagara Manufacturing Alliance
- American Society for Quality
- AFE
- trying to start itSMF Local Interest Group
- ASME (American Society of Mechanical Engineers)



Non-Profit group involvement?

- **Meals on Wheels of Western NY**
- **Boy Scouts of America Eagle award has requirements to do a leadership project -value in teaching the boys the values and methodology of scope, schedule and cost defined by PMI.**
- **how about the government arena? while not a NFP, advise on project cost management could help!**
- **United Way of Erie County, Cattaraugus County**
- **Habitat of Humanity**
- **Boys & Girls Club**
- **Challenger Learning Center of the Twin Tier Region**



Company Outreach?

- Praxair might be able to help in the FEL process with other members
- U.S. Army Corps of Engineers
- Dominic Biasillo, Moog Inc. Eric Reinhart, Moog Inc.
- My company has a PMO office, but they are based outside of the area.
- Dave Nye, Director, Worldwide Development Engineering
DNye@Dresser-Rand.com (716) 375-3581

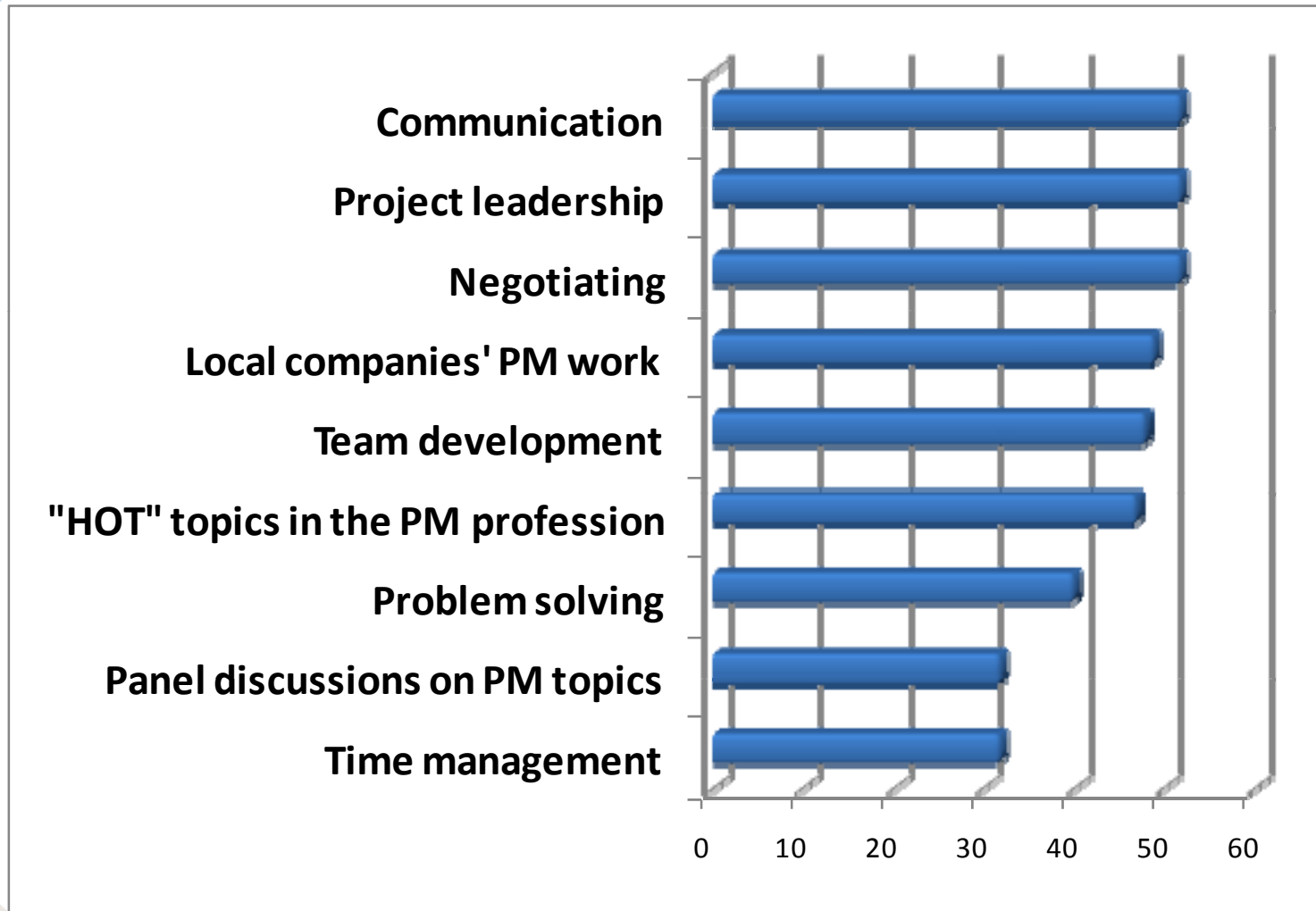


Interest in PMBOK program topics



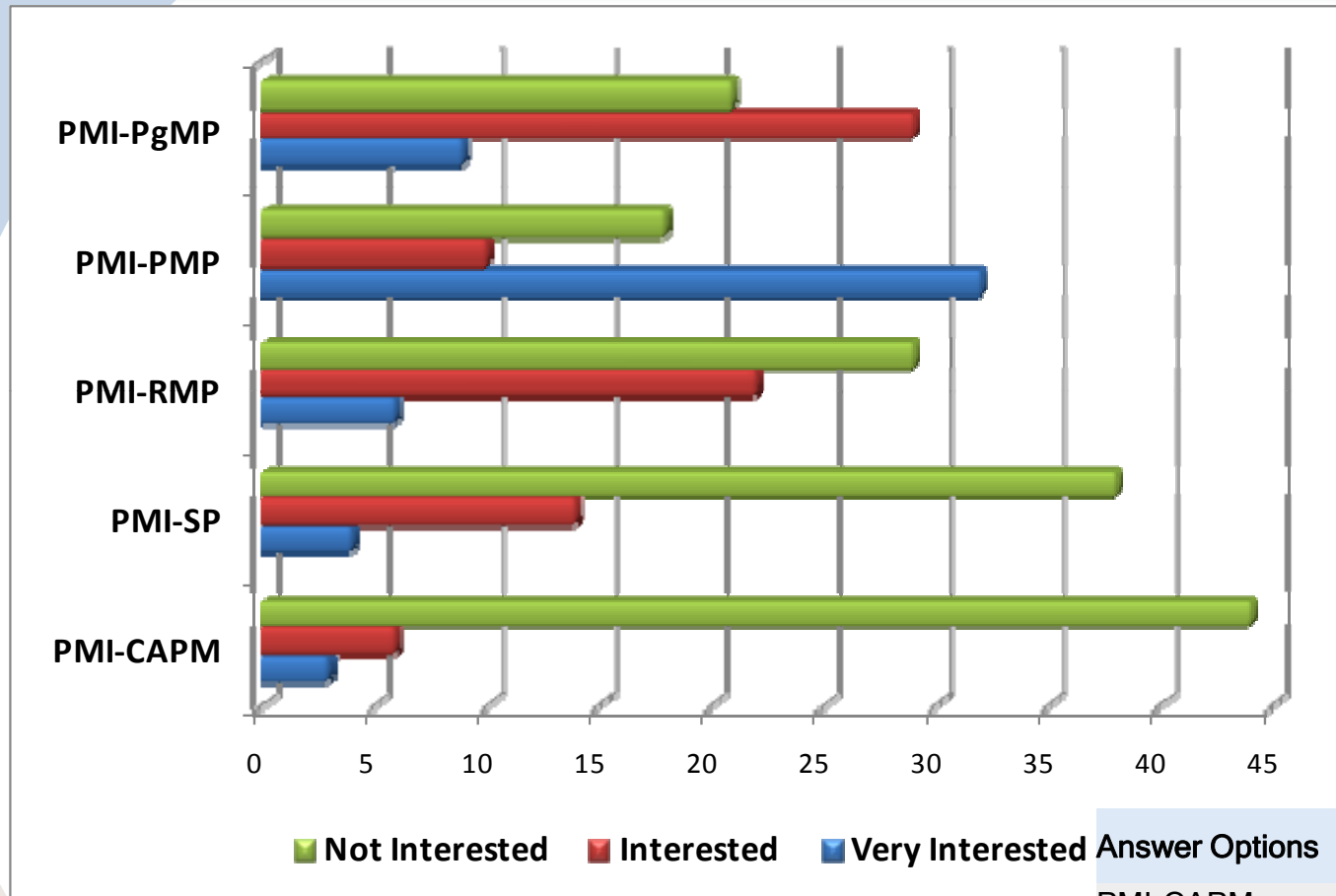


Interest: PM Soft Skills program topics



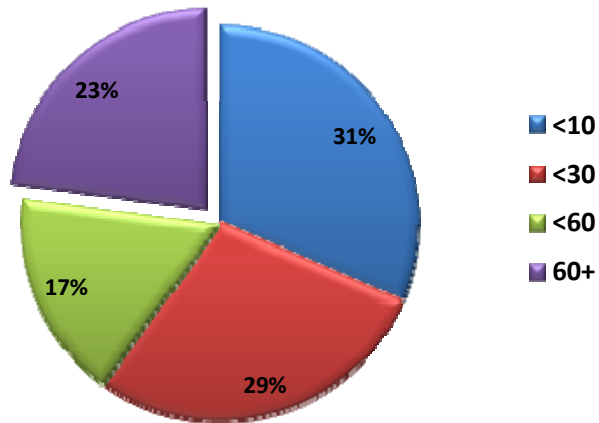


Level of interest in PMI credentials

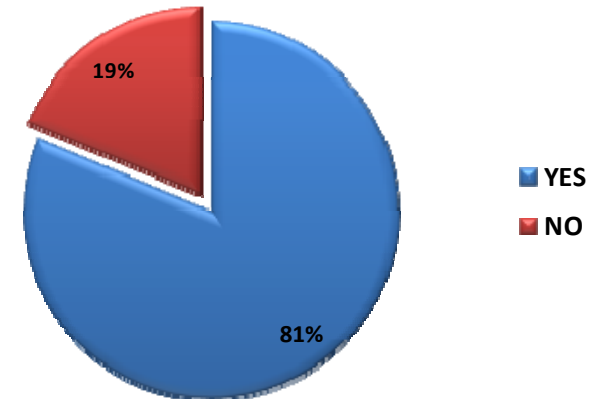


Answer Options	Very Interested	Interested	Not Interested
PMI-CAPM	3	6	44
PMI-SP	4	14	38
PMI-RMP	6	22	29
PMI-PMP	32	10	18
PMI-PgMP	9	29	21

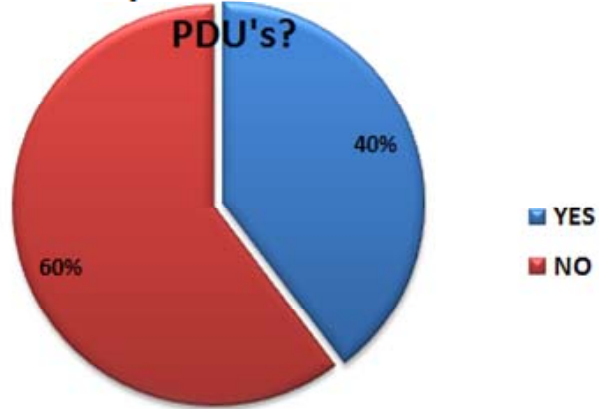
Estimated Member PDU's



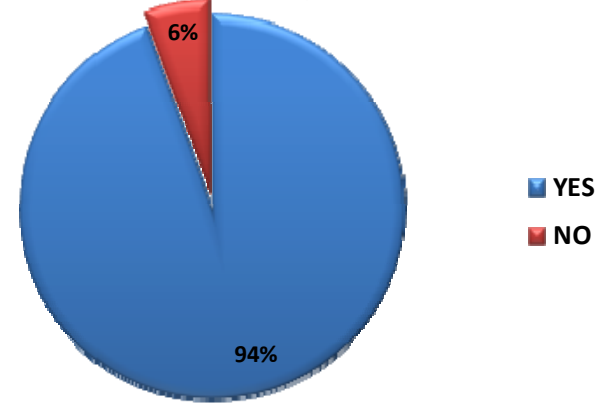
Do you know your Certification Expiration Date?



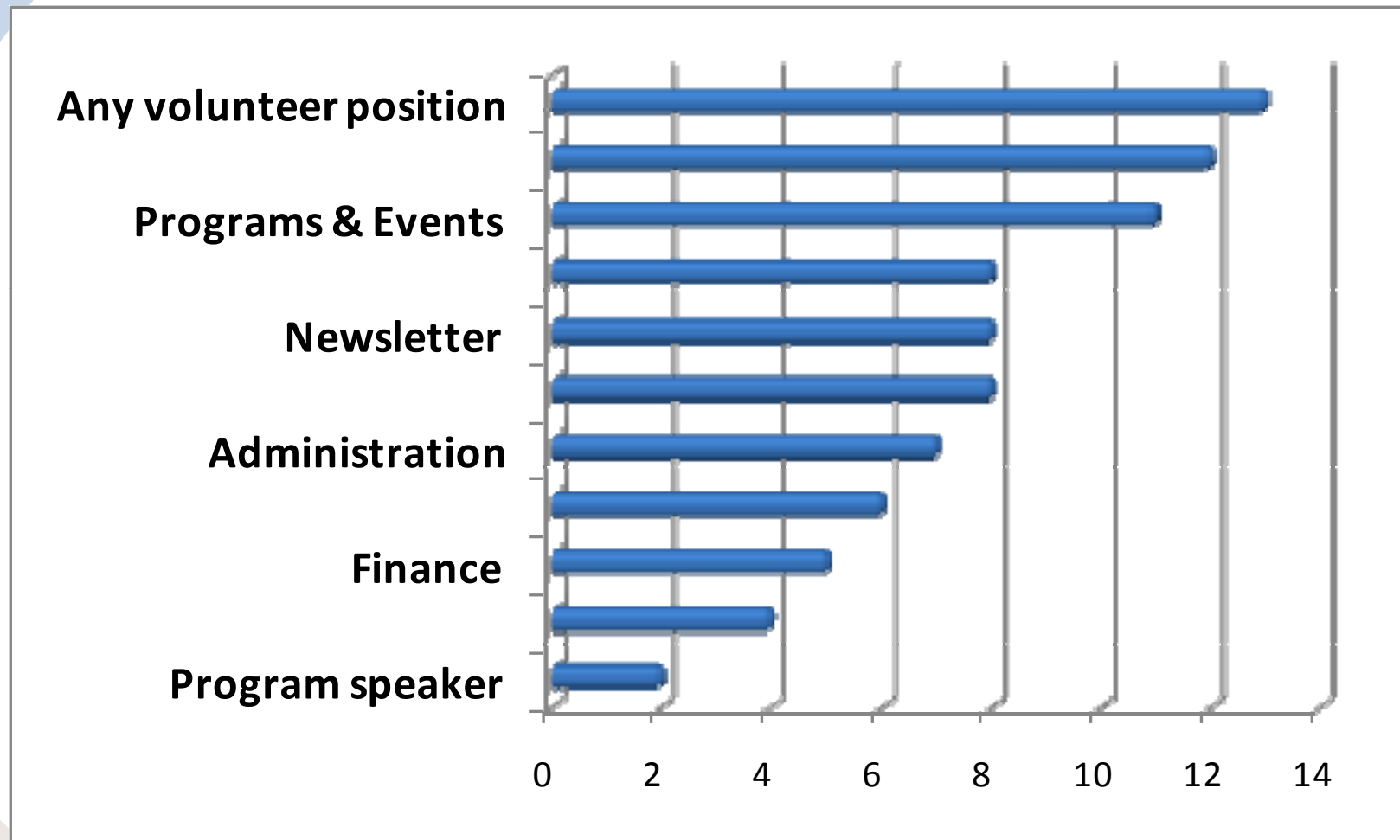
Are you looking for opportunities for professional development and to earn PDU's?



Would you still attend PMI Buffalo events if you have met your PDU Cycle requirements?



Volunteer Interests (QTY 30):





PMI Buffalo Chapter 2010 Annual Membership Survey Results

David Lynch, Trustee - Board of Directors
trustee@pmibuffalo.org
dlynch@mtb.com

Accompanied Documents:

SurveySummary_07292010.xlsx

2010 Survey Raw Data_Final.xlsx

*Volunteer Listing send to Membership